

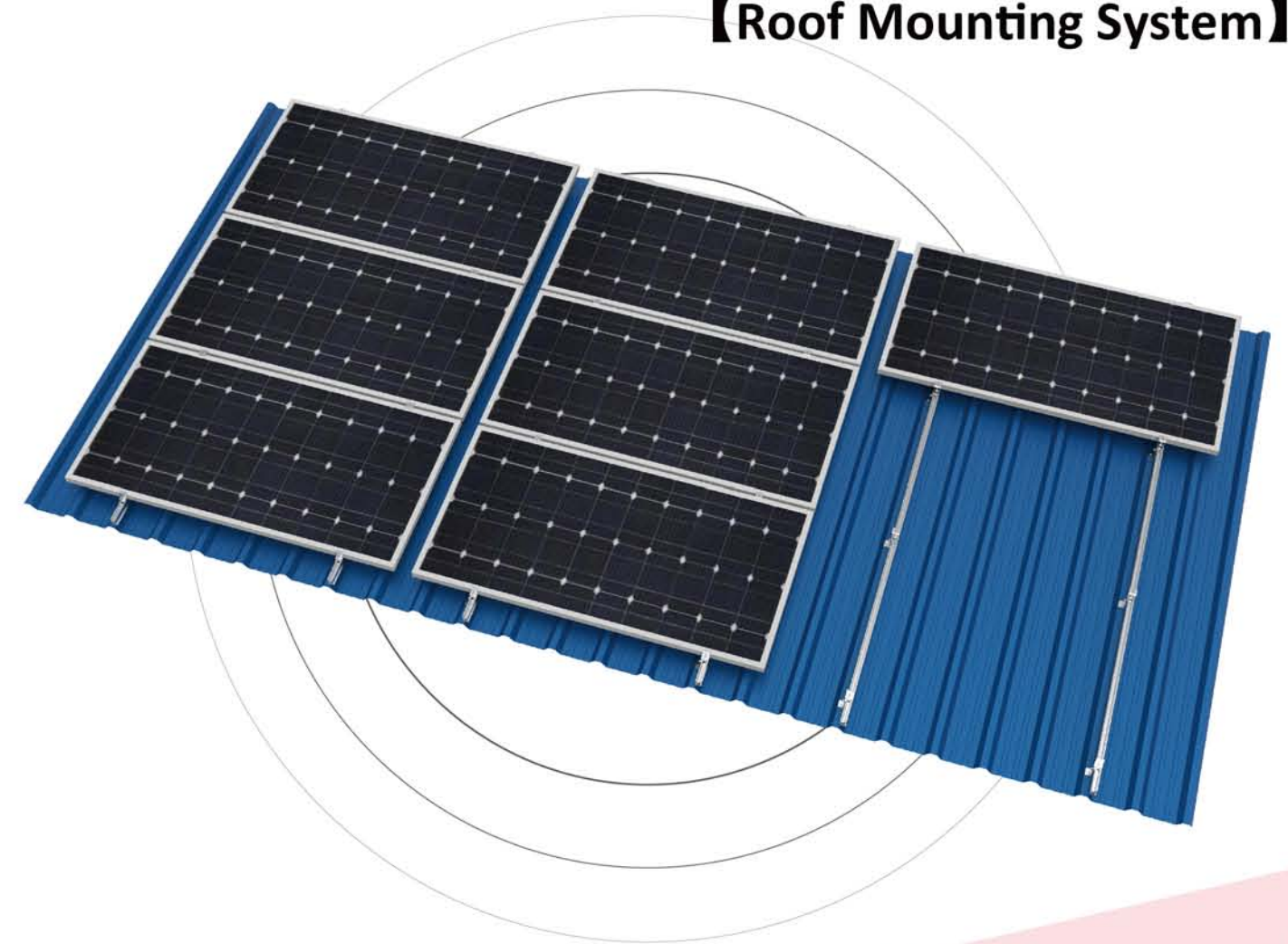
*Main Markets*



# SOLAR PANEL BRACKETS

PV MOUNTING SOLUTIONS

【Roof Mounting System】



**XIAMEN UNIVERSE SOLAR TECHNOLOGY CO.,LTD**

Add.: Rm. 704, Building A02, Phase 3, Software Park, Jimei, Xiamen, Fujian, China

Web: [www.uisolar.com](http://www.uisolar.com) Email: [sales@uisolar.com](mailto:sales@uisolar.com)

Tel: +86-592-566-3849 Fax: +86-592-517-0790



XIAMEN UNIVERSE SOLAR TECHNOLOGY CO.,LTD





# CATALOGUE

# COMPANY PROFILE

## Why UISOLAR?

### 01 Reasonable Design and Solution

All the solution will be designed based on strict strength calculation.

### 02 High Quality

All the goods will be tested before shipment and most of the goods will be pre-assembled.

### 03 Best Service

We will response to you within 24H, for any feedback both before and after sales.

### 04 Certificate Support

For Customer's need, we have got so many certificates and inspections for our products.

Universe Solar (UISOLAR) is a high-tech enterprise specializing in the development, manufacturing, and marketing of photovoltaic racking solutions, including Pitched Roof Mounting Solutions, Flat Roof Mounting Solutions, Ground Mounting (both for Aluminum and Steel) Solutions and Solar Carport.

With the Principle of " Innovative, Environment Friendliness and Responsibility ", UISOLAR set up in 2010 in Xiamen, China.

In order to provide the high quality and easy installation products, all the products are offered the strength calculation and tested by QC before shipment, and most of the products are pre-assembled before the shipment to save the installation time.

With our top quality and service, UISOLAR mountings are welcomed by most of the installers, distributors, and EPC all around the world.

01-02	Pitched Tile Roof Mounting
03-04	Pitched Tin Roof Mounting
05-06	Standing Seam Roof Mounting
07-08	Mini Rail Solution for Trapezoidal Roof
09-10	Flat Roof Mounting
11-12	Aluminum Triangle Mounting
13-14	Aluminum Ballasted Mounting
15-16	Steel Ballasted Mounting
17-18	Flash Kits
19-20	FRP Solar Walkway
21-26	Components
27-28	Projects



Pitched Tile Roof Mounting is designed with great flexibility for both commercial and residential solar roof system. Patented and innovative design, standard components, highly pre-assembled clamp, all make the installation simple. Save your installation time and cost.



Components List



Hot Sales Hooks List



UISOLAR Pitched Tin Roof Mounting is designed with great flexibility for both commercial and residential solar roof system. Patented and innovated designed rail, universal components, highly pre-assembled components, all make the installation simple. Save your time and installation cost.

Advantages:

1. Lower cost, incomparable value
2. Faster installation, flexible fixing
3. Completely technical support



## Components List

UI-IC 4



UI-EC



UI-R



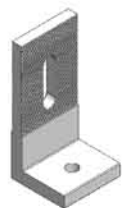
UI-IK-L



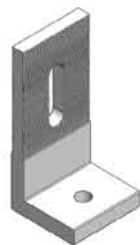
## Different types of L feet for different need



84mm height



125mm height



160mm height



Steel L feet



Hollow L feet



UI-IK-H01



UI-IK-H01L



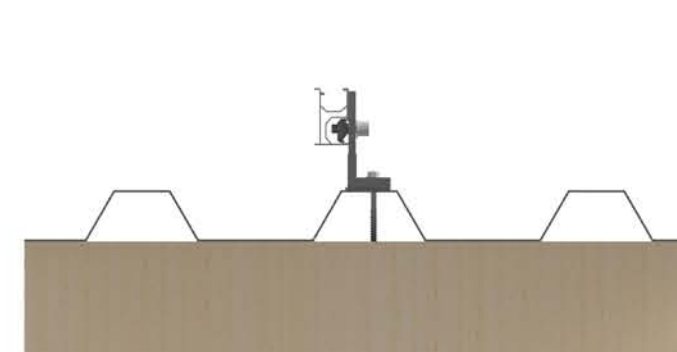
UI-IK-H10P



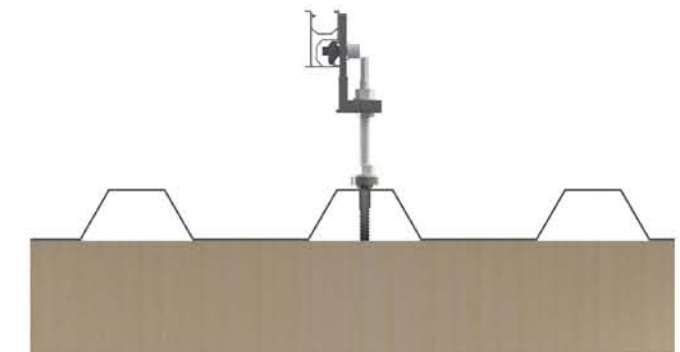
UI-IK-05L

## Different connections for different situation

### 1 For wooden beam

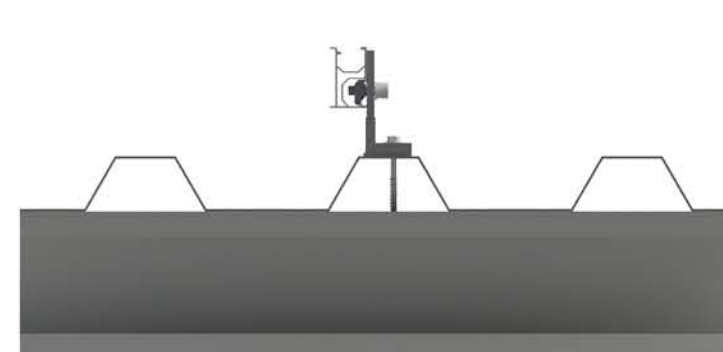


L feet + wooden screws

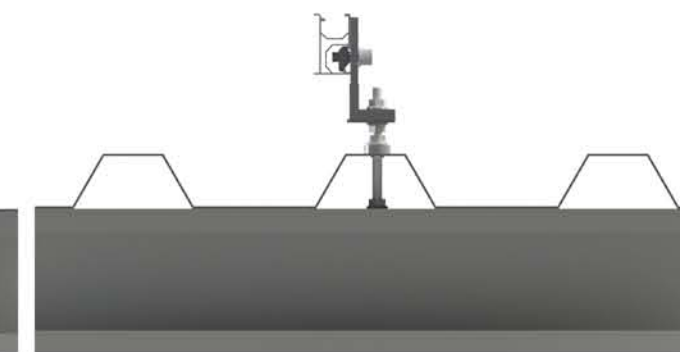


L feet + hanget bolt

### 2 For steel beam



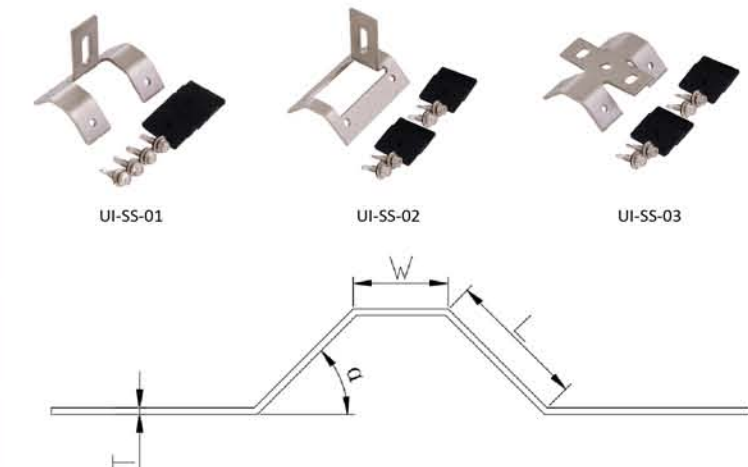
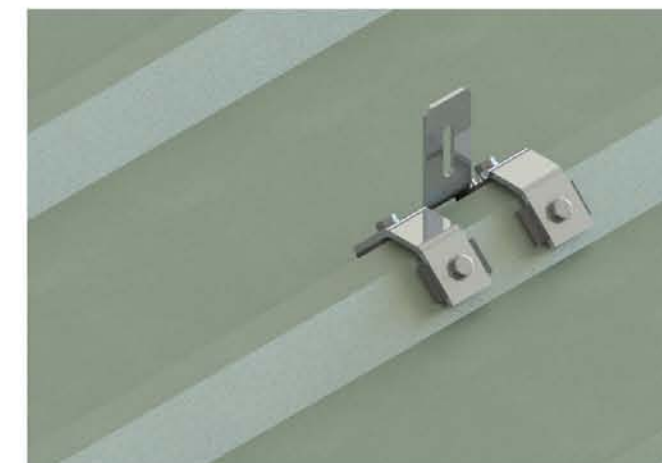
L feet + self tapping screws



L feet + threaded bolt

### 3 Typically trapezoidal roof

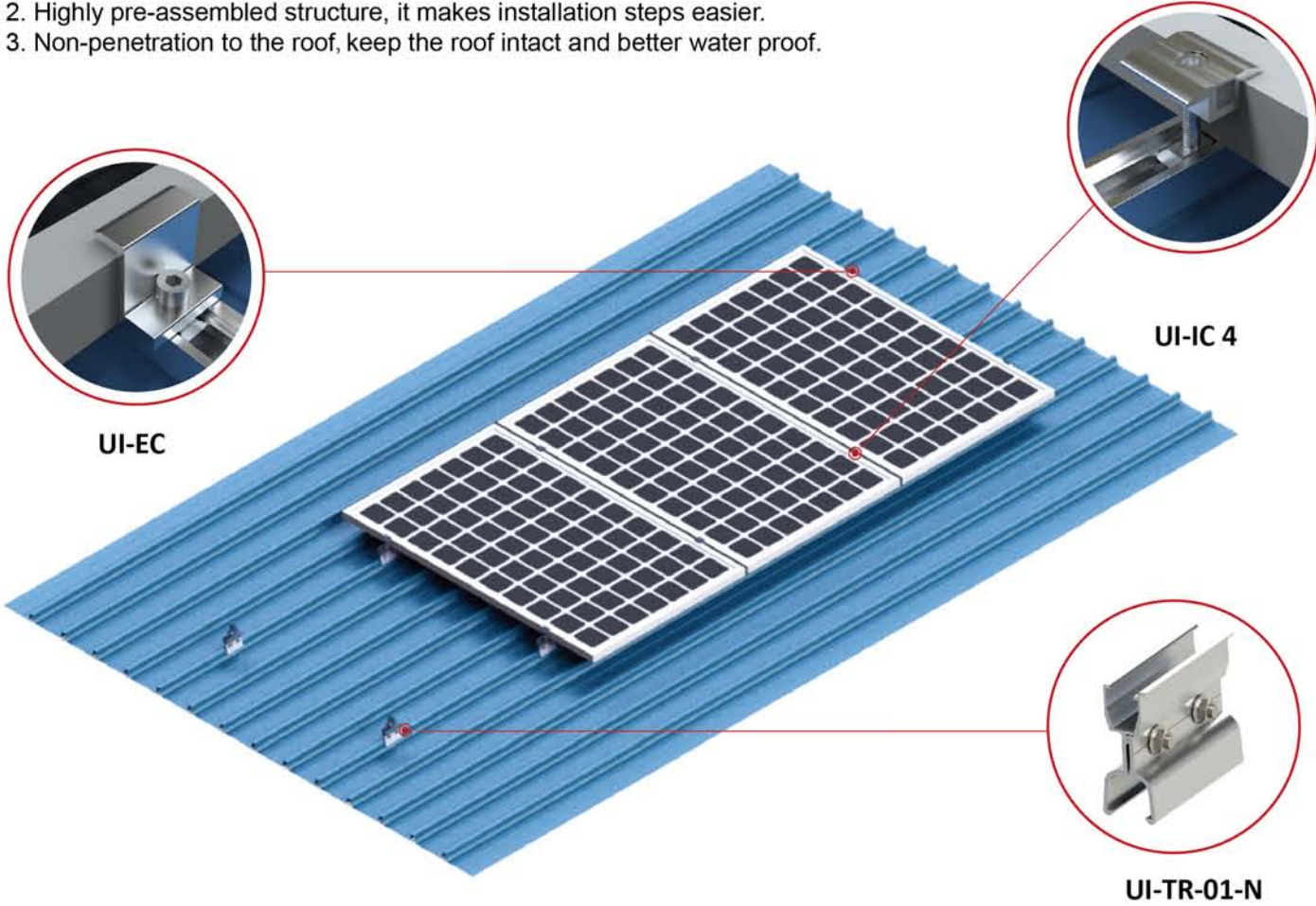
This type of hook is designed for typically trapezoidal roof. All the mentioned dimension should be confirmed to suit it.




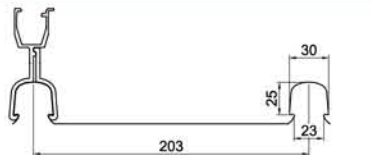



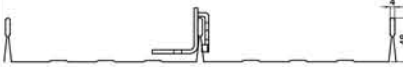



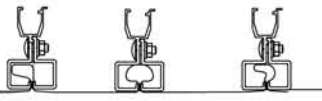
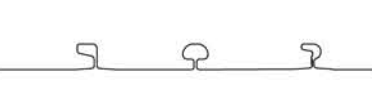



Standing Seam Roof Mounting is designed for metal roof sheet with non-penetration solution. Most of them are made of aluminum to provide a lightweight and easy installation solution.

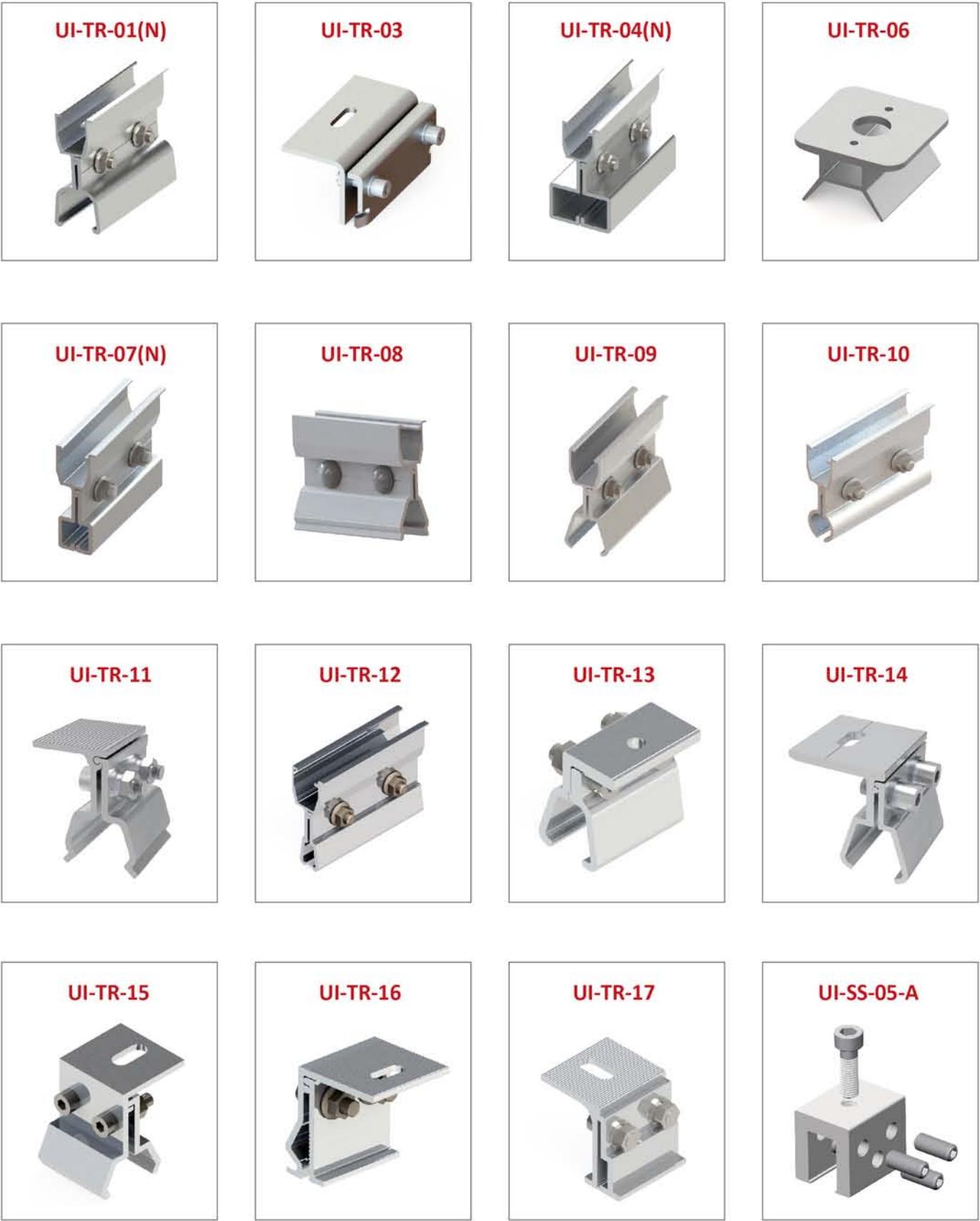
- Advantages:
- 1. Just need bolt to fix,save labor time and cost.
  - 2. Highly pre-assembled structure, it makes installation steps easier.
  - 3. Non-penetration to the roof, keep the roof intact and better water proof.



Workable Roof Reference

Item No.	Installation Reference	Roof sheet Reference	Roof sheet Picture
UI-TR-01(N) 			
UI-TR-03 			
UI-TR-04(N) 			

Hot Sales Clamping Hooks List





UI-SS-04 mounting kit, UI-SS04-70 mounting kit and UI-SS07 Mounting kit are all mini rail solutions. They are designed for trapezoidal shape metal sheet roof.

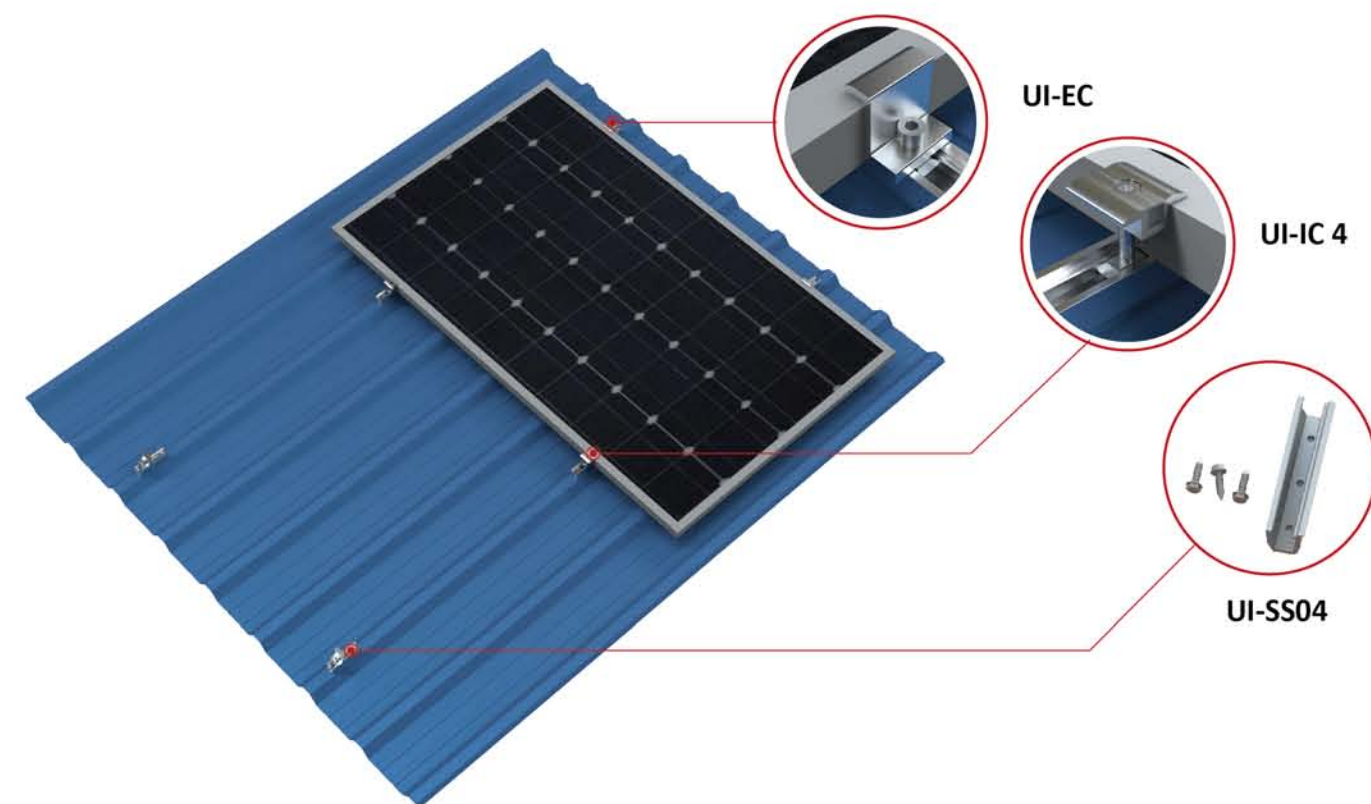
They are unity of rail and hook. One component, but two functions. It can work as rail and hook.

It can be fixed on roof to hold solar panels directly without aluminum rails.

Easy installation mounting kit, suitable for large-scale installation.

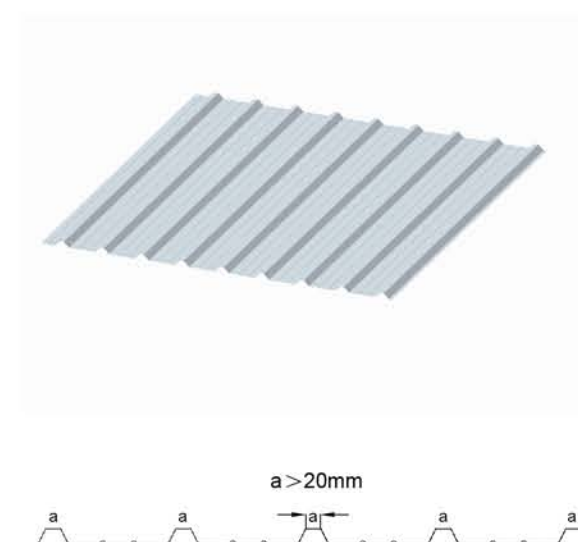
## SS04 & SS04-70 Installation :

Panel in landscape, SS04&SS04-70 are suggested.



### Application Roof

The trapezoidal crest should be more than 20mm if install SS04/SS04-70 mounting kit.



### Railess Solution



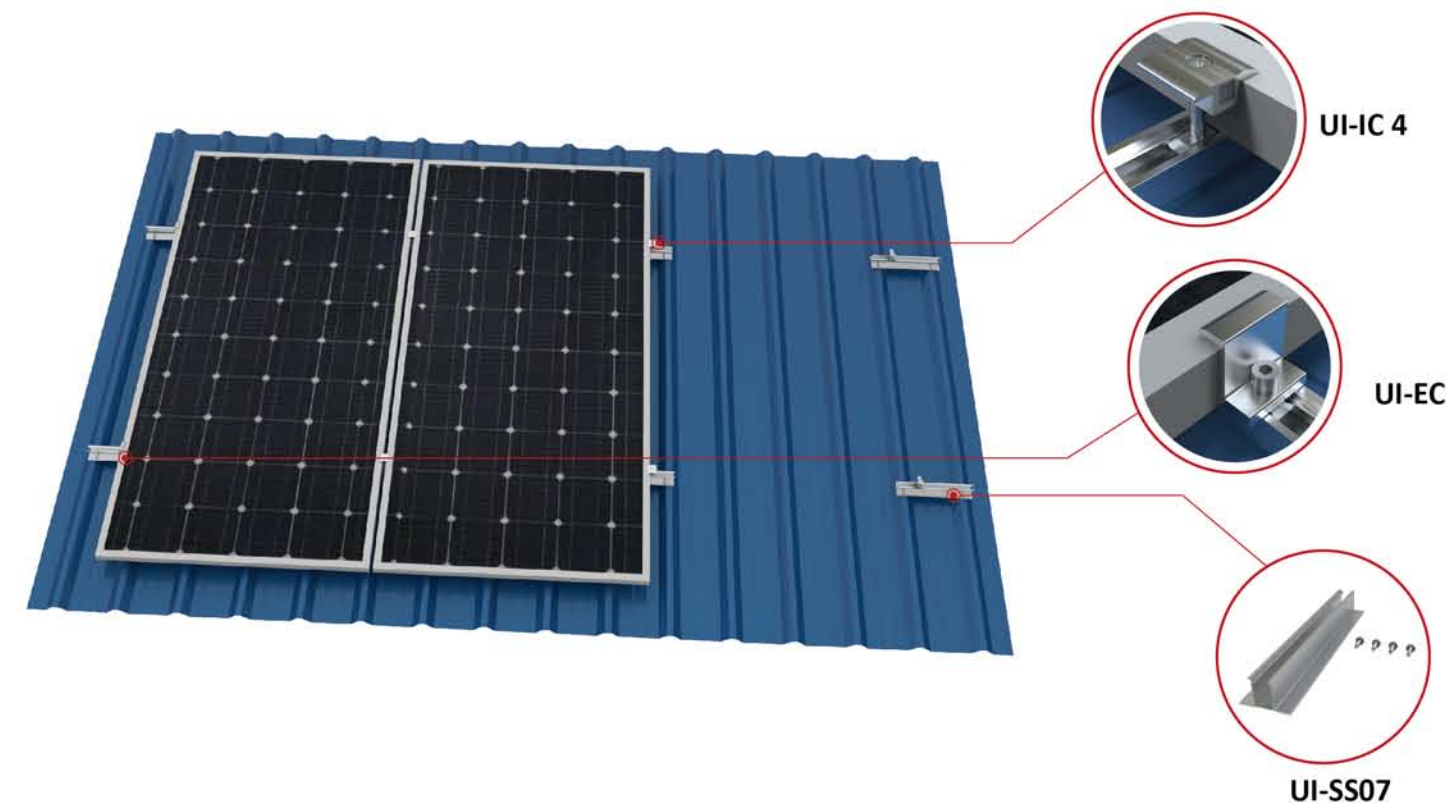
Different choices for different requirements.



UI-SS04 is 30mm height. UI-SS04-70 is 70mm height.

## UI-SS07 Installation :

Panel in portrait, SS07 are suggested.



There is no requirements for crest distance for SS07, the length of SS07 can be customized according to the roof crest. Better applicability.

## Advantages

1. Flexible for panel layout.
2. Available for regular stock preparation.
3. Customized length can be accepted.

## Packing





UISOLAR Flat Roof Mounting is designed to meet the adjustable tilt angles' need.  
Adjustable tilt angles make the system the best efficiency.

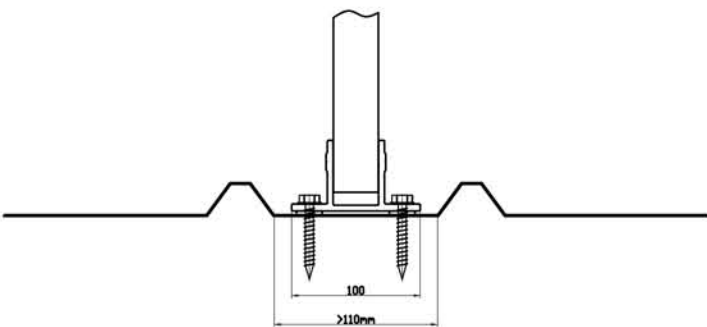
- Advantages:
- 1. Applicable to the tin roof and concrete roof.
  - 2. Adjustable tilt angles can be easier for stock preparation.
  - 3. Different sizes to meet different needs.
  - 4. Highly pre-assembled make it easy to install.



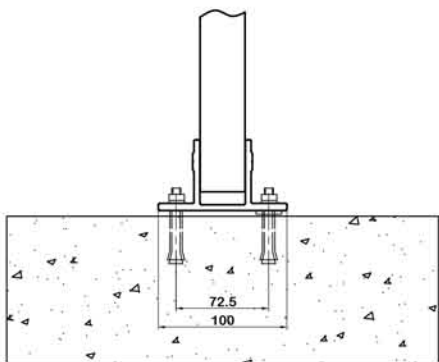
Applicable for tin roof datasheet > 110mm



Applicable for concrete roof



For tin roof



For concrete roof

Components List

UI-IC 4



UI-EC



UI-AD-FL



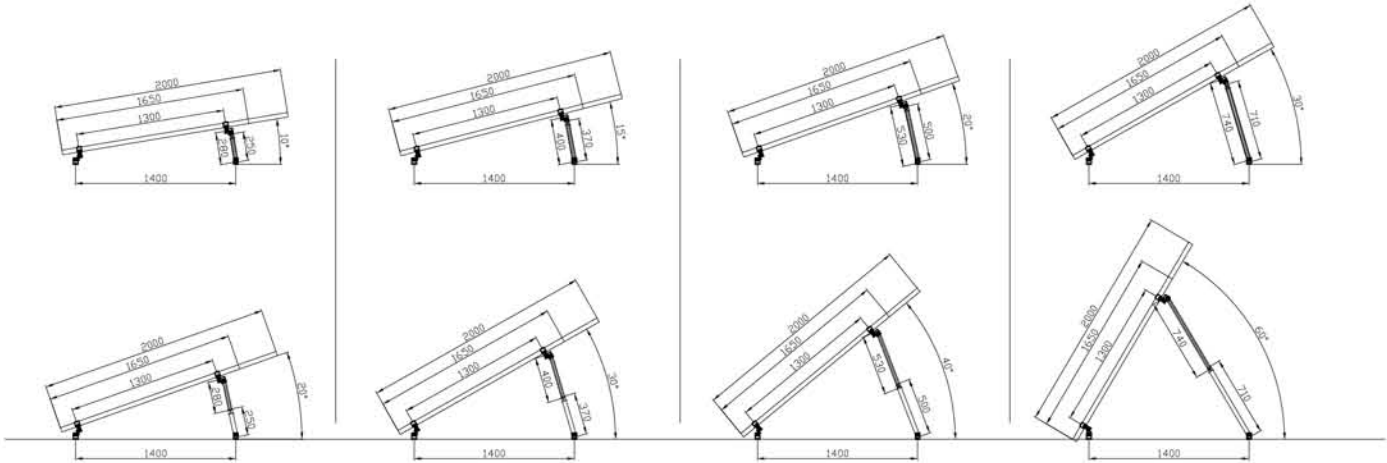
UI-R



UI-AD-RL



Adjustable Rear Leg	Specification	Adjustable Angle	Tube length outside/inside
	UI-RL-10/15	10-15 deg	250-280mm
	UI-RL-15/30	15-30 deg	370-400mm
	UI-RL-20/40	20-40 deg	500-530mm
	UI-RL-30/60	30-60 deg	710-740mm



UI-AD-RL10/15  
( for 1650~2000mm panel )

UI-AD-RL15/30  
( for 1650~2000mm panel )

UI-AD-RL20/40  
( for 1650~2000mm panel )

UI-AD-RL30/60  
( for 1650~2000mm panel )



Aluminum Triangle Mounting Structure is specially designed for flat roof, suitable for both metal roof and concrete roof. For different conditions and needs, we have three different types of triangle mounting structures to be chosen.

Railless Triangle Mounting

- 1.No need rail
- 2.Easy installation and low cost
- 3.Suitable for low wind speed area



Different Types for Railless Traignel Mounting

Type 1 : Fixed triangle mounting



Type 2: Adjustable triangle mounting



Projects Reference



Triangle Mounting with Rails

- 1.Can be fixed angle or adjustable angle as per customer's requirement
- 2.With rails can enhance the strength of the whole structure
- 3.Suitable for high wind speeds area



Fixed Angle Triangle Mounting



Adjustable Angle Triangle Mounting

Components List

UI-IC



UI-R-SP



UI-EC



UI-Fixed Triangle Bracket



UI-R



UI-Adjustable Triangle Bracket



Adjustable Triangle Bracket	Specification	Adjustable Angle
	UI-AD-TM-Frame-10/15	10-15 deg
	UI-AD-TM-Frame-15/30	15-30 deg
	UI-AD-TM-Frame-20/40	20-40 deg
	UI-AD-TM-Frame-30/60	30-60 deg

Different Connection for Different Situation

For concrete foundation



Connect with expansion bolts

For metal roof with wooden beam



Connect with wooden screws

For metal roof with steel beam



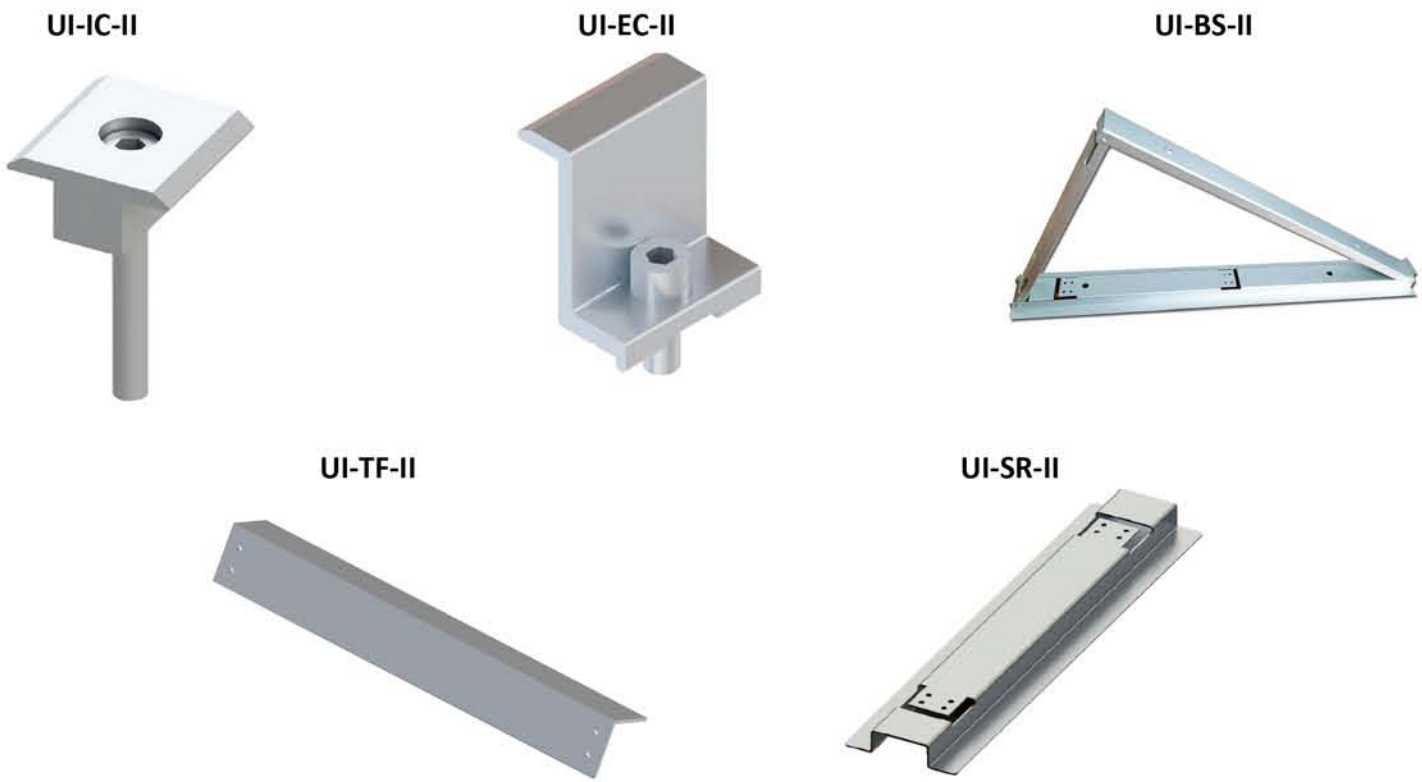
Connect with self-tapping screws



Aluminum Ballasted Mounting II is designed for flat concrete roof, and it's suitable for both residential and commercial area. The structure no need to penetrate the roof surface and its light weight lessen the roof pressure.



## Components List



## Adjustable Ballasted Mounting



Adjustable ballasted mounting is also available here, it can adjust the angle of 10, 15, 20, 25, 30, 35 degree to meet different needs. Marked scale is easy for angle adjustment.

## Brief Installation Guide



## Projects Reference

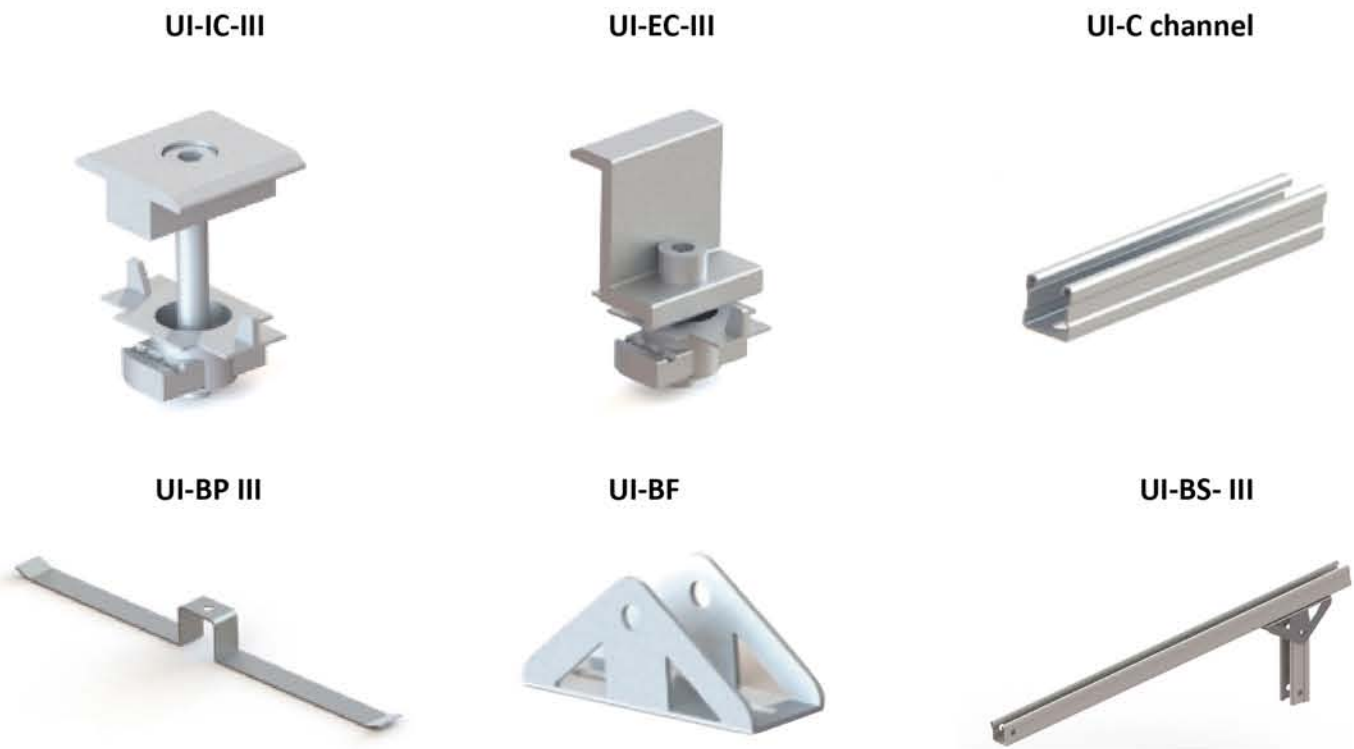




Steel Ballasted Mounting III is designed for flat concrete roof, suitable for higher conditions than Aluminum Ballasted Mounting, without penetrating the roof surface, using rails to support the panels. Both Landscape and Portrait layout can be workable.



## Components List



## Advantages



1. Flexible panel orientation, makes sunlight the most effective use.
2. Non-penetrating to the roof surface.
3. Highly pre-assembly structure saves your installation time and cost.

## Brief Installation Guide



## Packing





Flash Kits are designed for composite /asphalt shingle roofs to make a better waterproof. Different types flash kits to meet different needs. Different height of L kits are designed for maximum adjustability for installation.

Flash L-kit 1



Components List

L feet



M8 Wooden screw



Flashing plate  
size:300\*225\*0.5mm



Rubber pad



Brief Installation Guide

- 1 Put the flashing plate under a shingle sheet, you may need to use a wide putty knife to cut the sheet
- 2 Place rubber pad and L kit on the flashing plate
- 3 Bolt L kit with wooden screw on the rafter
- 4 Fix the rail to the L kit



Flash L-kit 2



Flash kit 2 installed with L feet



Flash L-kit 3



Flash kit 3 installed with L feet



Flash L-kit 4



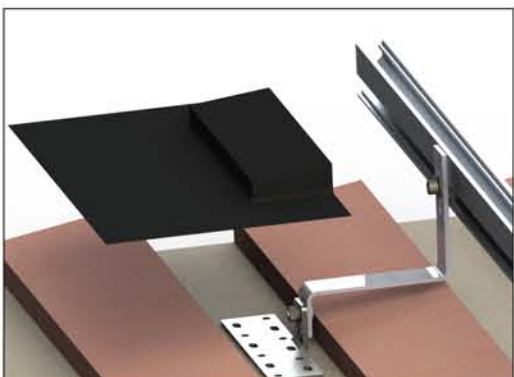
Flash kit 4 installed with L feet



Flash L-kit 5



Flash kit 5 installed with tile roof hook





# FRP Solar Walkway

FRP walkways are acid-base corrosion resistant, insulating and easy to install. It is specially designed to ensure the safety of the solar rooftop walkway area. It not only effectively extends the service life of commercial and industrial rooftop, but also provides a safe pathway for the equipment installed on the roof.

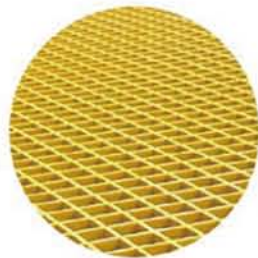


FRP walkways system include gratings and connection fittings.They are used in power plants, chemical plants, water treatment, oil platforms and other corrosion environment.

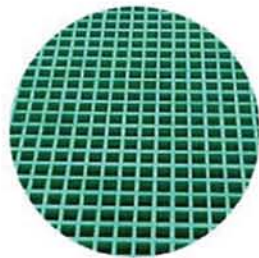
## Walkway Gratings

Material : 196 Ortho Benzene Resin, Fiberglass

Color :



Yellow



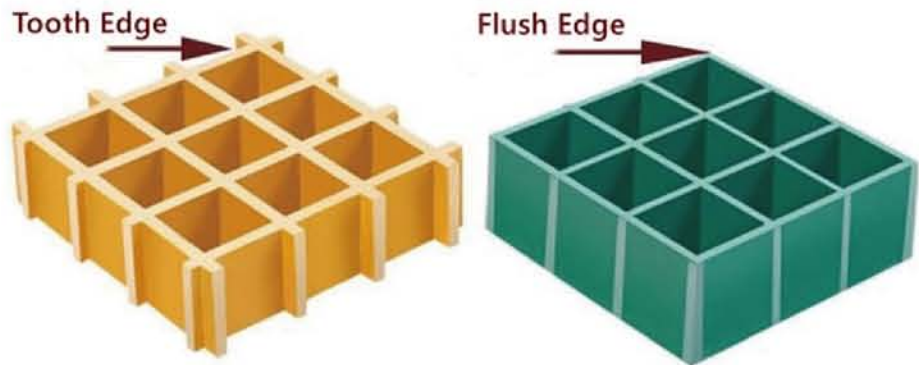
Green



Grey

Warranty : 1year, 5years service life

Type : Flush Edge and Tooth Edge









## Regular dimension for flush edge type:

Mesh (MM)	Thickness(MM)	Size (Wx L/PC) MM
38X38	25/30	385X995; 425X1035; 505X995; 505X1035; 505X1985; 505X2023; 995X1985; 1035X2023
40X40	25	410X1020; 495X1020; 495X1995; 1020X1995

Note: If tooth edge type is accepted , then the size can be customized , which can be cut by yourself.

## Walkway Fittings

Model	C Clip	M Clip	L Clip
Material	SUS304	SUS304	SUS304
Picture			
Description	Used to connect two gratings	Used to connect the walkway to the structure	Used to connect the walkway to the structure
Application			

## Application Reference





## Rails for Roof Mounting

UI-R1



ITEM NO.	MATERIAL	SPEC.	WEIGHT	SURFACE
UI-R1-4200	Al 6005-T5	4200mm	4145 g	Anodized
UI-R1	Al 6005-T5	Customized	-	Anodized

UI-R2



ITEM NO.	MATERIAL	SPEC.	WEIGHT	SURFACE
UI-R2-4200	Al 6005-T5	4200 mm	3394 g	Anodized
UI-R2	Al 6005-T5	Customized	-	Anodized

UI-R4



ITEM NO.	MATERIAL	SPEC.	WEIGHT	SURFACE
UI-R4-4200	Al 6005-T5	4200 mm	5229 g	Anodized
UI-R4	Al 6005-T5	Customized	-	Anodized

UI-R6



ITEM NO.	MATERIAL	SPEC.	WEIGHT	SURFACE
UI-R6-4200	Al 6005-T5	4200 mm	4200 g	Anodized
UI-R6	Al 6005-T5	Customized	-	Anodized

UI-R13



ITEM NO.	MATERIAL	SPEC.	WEIGHT	SURFACE
UI-R13-4200	Al 6005-T5	4200 mm	2869 g	Anodized
UI-R13	Al 6005-T5	Customized	-	Anodized

UI-R16



ITEM NO.	MATERIAL	SPEC.	WEIGHT	SURFACE
UI-R16-4200	Al 6005-T5	4200 mm	2054 g	Anodized
UI-R16	Al 6005-T5	Customized	-	Anodized

UI-R-SP



ITEM NO.	MATERIAL	SPEC.	WEIGHT	SURFACE
UI-R-SP	Al 6005-T5	190 mm	105 g	Anodized

## Framed Panel Clamps

UI-IC



ITEM NO.	MATERIAL	SPEC.	SURFACE
UI-IC-30	Al 6005-T5	30 mm	Anodized
UI-IC-35	Al 6005-T5	35 mm	Anodized
UI-IC-40/42	Al 6005-T5	40/42 mm	Anodized
UI-IC-45/46	Al 6005-T5	45/46 mm	Anodized

UI-IC (247)



ITEM NO.	MATERIAL	SPEC.	SURFACE
UI-IC(247)-30	Al 6005-T5	30 mm	Anodized
UI-IC(247)-35	Al 6005-T5	35 mm	Anodized
UI-IC(247)-40	Al 6005-T5	40 mm	Anodized
UI-IC(247)-45	Al 6005-T5	45 mm	Anodized

UI-IC 4



ITEM NO.	MATERIAL	SPEC.	SURFACE
UI-IC4-30	Al 6005-T5	30 mm	Anodized
UI-IC4-35	Al 6005-T5	35 mm	Anodized
UI-IC4-40	Al 6005-T5	40 mm	Anodized
UI-IC4-45	Al 6005-T5	45 mm	Anodized

UI-EC



ITEM NO.	MATERIAL	SPEC.	SURFACE
UI-EC-25	Al 6005-T5	25 mm	Anodized
UI-EC-30	Al 6005-T5	30 mm	Anodized
UI-EC-35	Al 6005-T5	35 mm	Anodized
UI-EC-40	Al 6005-T5	40 mm	Anodized
UI-EC-42	Al 6005-T5	42 mm	Anodized
UI-EC-45/46	Al 6005-T5	45/46 mm	Anodized

UI-AE



ITEM NO.	MATERIAL	SPEC.	SURFACE
UI-AE	Al 6005-T5	35-50 mm	Anodized
UI-AE2	Al 6005-T5	30-45 mm	Anodized

UI-IC 5A



ITEM NO.	MATERIAL	SPEC.	SURFACE
UI-IC 5A-30	Al 6005-T5	30 mm	Anodized
UI-IC 5A-32	Al 6005-T5	32 mm	Anodized
UI-IC 5A-35	Al 6005-T5	35 mm	Anodized
UI-IC 5A-40	Al 6005-T5	40 mm	Anodized

UI-EC 5A



ITEM NO.	MATERIAL	SPEC.	SURFACE
UI-EC 5A-30	Al 6005-T5	30 mm	Anodized
UI-EC 5A-32	Al 6005-T5	32 mm	Anodized
UI-EC 5A-35	Al 6005-T5	35 mm	Anodized
UI-EC 5A-40	Al 6005-T5	40 mm	Anodized



# Thin Film Solar Clamps

UI-IC-Type4



ITEM NO.	MATERIAL	SPEC.	SURFACE
UI-IC-Type4	Al 6005-T5	For Thin Film Panel (No Bolt,No Nut)	Anodized

UI-EC-Type4



ITEM NO.	MATERIAL	SPEC.	SURFACE
UI-EC-Type4	Al 6005-T5	For Thin Film Panel (No Bolt,No Nut)	Anodized

## Regular Nut

St1 Nut



ST3 Nut



ST2 Nut



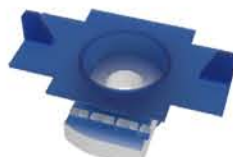
Flange Nut



Hex Nut



ST6 Nut



## Grounding Components

UI-GL



UI-BJ



UI-BJ2



UI-GW



UI-GW2



UI-GW 3



UI-GW (R5A/R5B)



UI-GW 4



UI-GW-5#



## Clamps with Grounding Pins

UI-IC-5A-(G)



UI-IC 4(G)



UI-IC-(G)



UI-EC-(G)





UI-CC1



1-2 Cables

UI-CC2



3-4 Cables

UI-CC3



1-2 Cables

UI-CC4



1-2 Cables

UI-CC5



1-2 Cables

UI-CC6



3-4 Cables

Cable Tray

Cable Tray 1



Cable Tray 2



Solar cable 1.5mm2~35mm2



MC4 Extension cable



MC4 Connector



Multi-T-Branch-MC4-Connector



MC4 T 1-3branch pv connector



Y branch MC4 Connector







200KW in Poland



4MW in Poland



50KW in Singapore



100KW in Netherlands



500KW in Australia



80KW in Norway



50KW in Barbados



30 KW in Switzerland



15KW in India



45KW in Norway



50KW in the Netherlands



50KW in HK



1.5MW in Sri Lanka



2MW in Austria



1.5MW in Bangladesh



150kw in Switzerland